

Feature Story:

First Smart Meters Being Installed This Month

NHEC's Advanced Metering Infrastructure (AMI) has begun to take shape with the installation this month of new smart meters in Meredith and Plymouth.

Approximately 3,000 members will be receiving the new meters during the first phase of installations. NHEC plans to install approximately 35,000 smart meters this year, primarily in the Lakes Region and greater Plymouth areas where the communications infrastructure needed to transmit meter data is in place and functioning. (Learn more about the technology at www.nhec.coop.)

As the communications infrastructure is built out statewide over the coming months, meter installations will follow in those areas. When your neighborhood is scheduled to receive new meters, you'll receive notification by mail from the Co-op about a month before a meter installer visits your property. The installation will require a brief interruption of power, but you do not need to be home when the installer arrives to exchange your meter. By the end of October 2012, every Co-op member will have a new smart meter.

So what does that mean for you?

In the short term, very little will change. Power rates will not change (except for regular seasonal adjustments for the cost of power) and you'll still be billed once a month by the Co-op. NHEC will not be controlling your electric usage in any way. Simply installing a smart meter does not give NHEC the ability or the right to control how or when you use energy in your home or business. One thing you will notice after the communications infrastructure is complete – no meter reader visiting your property. That's because your meter will be reporting its own readings several times a day via a "mesh network" of radio communications.

What's a mesh network?

Think of your smart meter as one link in a big chain. Your meter will be automatically reporting usage data several times per day via a small, 1/4-watt radio in the device itself. Each transmission, approximately 1.5 seconds in duration, will be sending readings to the next closest meter, which relays that data, as well as its own readings and moves it along to the next meter in the chain. Eventually, that bundle of data reaches a "gatekeeper", which sends it to NHEC headquarters in Plymouth for processing.

Down the road...

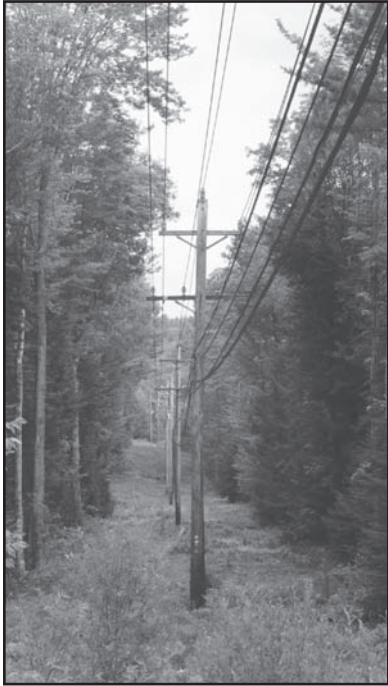
While the focus now is on meter installations, in a few months you'll be able to use the technology to better understand and manage your energy use. The data compiled by your smart meter will be available for viewing 24/7 via a free web portal located on your account homepage at www.nhec.coop. With a few clicks, you'll be able to see your electric usage in weekly, daily, even hourly increments. With detailed information about how and when you're using electricity, you can take steps to save energy and see the results online the next day.

Keep checking your monthly newsletter and the NHEC website for updates!



AMI meters look similar to the older electromechanical meters in use across Co-op service territory. Instead of gears and dials, AMI meters use a digital display to measure electric usage. A small transmitter in each meter sends usage data several times a day.

Right of Way Clearing



In the battle against power outages, right-of-way clearing is the Co-op's most effective weapon. A right-of-way (ROW) refers to the strip of land underneath and around power lines that NHEC has the right to access for vegetation maintenance purposes. Property owners of land on which NHEC maintains a ROW often have questions about how the land can be used and how NHEC goes about keeping its ROWs clear.

Each year, NHEC spends nearly \$2 million clearing approximately 340 miles of land beneath power lines. The NHEC website (www.nhec.coop) has a schedule that identifies where ROW clearing is occurring or will be occurring. This schedule is updated periodically to reflect the most recent work being done.

Also online, see our guide to ROW clearing (Clearing the Way), which details the Co-op's right of way clearing policies and practices.

Heating Season? Already!? Plan Now with 2011 Rebates

NHEC is offering financial incentives up to \$10,000 for home and business owners to install efficient heating solutions.

For Businesses...

Rebates up to \$5,000 are available for Commercial & Industrial members that take steps to reduce their fossil fuel usage. Typical installations will include, but are not limited to, energy-efficient boilers, boiler controls, insulation and weatherization. Rebates are available up to 50% of the installed cost up to \$5,000 annually. For program details and applications, click 'Fossil Fuel Savings' under the Business menu at www.nhec.coop, or call 1-800-698-2007.

Heat Pumps for Homes...

NHEC is offering rebates for the installation of various heat pump technologies in new construction and existing homes. These heating and cooling systems operate at efficiencies much higher than standard fossil fuel equipment. They generate no onsite emissions, improve indoor air quality and create a healthier home environment (no on site combustion equipment or fuel storage).

For new homes to be built in NHEC service territory, rebates are available up to \$4,500 for the installation of Geothermal Heat Pumps and Hybrid Heat Pumps. For existing homes in NHEC service territory, rebates up to \$10,000 are available for conversion of existing heating systems to Geothermal or Hybrid heat pumps. For program details and applications, click 'Heat Pumps' under the Residential - Energy Efficiency Programs menu at www.nhec.coop; or call 1-800-698-2007.

nhsaves Catalog



The nhsaves catalog is online and better than ever, thanks to a redesign that makes it easier to use...and save!

Browse the nhsaves catalog at <http://catalog.nhsaves.com> to see a wide variety of stylish, energy-efficient lighting solutions, as well as new features, including:

- Instant access from any web browser
- View pages in thumbnails to preview catalog quickly
- Ability to print pages from the catalog
- High quality image display, including enlargements of all product images
- Ability to add notes and/or bookmarks to the catalog

The nhsaves catalog is produced by a collaboration of New Hampshire's electric utilities to provide New Hampshire residents with information, programs and support designed to reduce energy use, save money and protect our environment.



SQUAM LAKES
NATURAL SCIENCE CENTER

\$5 Off Admission

New Hampshire Electric Co-op Members
present this coupon to receive discount.
Limit four admissions per coupon.

Coupon expires 11/1/11.

Holderness, NH

(603) 968-7194



For member service
please call
1-800-698-2007
Monday-Friday, 8-5:00
or visit us online at www.nhec.coop

To report an outage
please call
1-800-343-6432

New Hampshire Electric Cooperative
579 Tenney Mountain Highway
Plymouth, NH 03264