

## NH SUPREME COURT: IT'S LEGISLATURE'S JOB TO FIX UTILITY PROPERTY TAX ISSUES

In a recent newsletter, we described how some municipalities tax utility property at much higher valuations than other municipalities. As the law stands, each Town can assess utility property using its own methods. Some have drastically increased assessments, in some cases doubling or even tripling their assessments on Co-op property in just one year.

Assessment disparities have resulted in numerous lawsuits between utility companies and municipalities. The Co-op has participated in some, because we want to prevent unfair and dramatic property tax hikes from unnecessarily increasing your utility bills. Co-op members pay a share of the taxes assessed by all towns where we own property so this issue affects you whether you live in a high tax or low tax community.

In a recent case, the Supreme Court found that the towns' valuations were not illegal. However, it doesn't mean they are good policy, especially if they result in residents of some towns subsidizing the tax revenues of other towns.

Supreme Court Justice Robert Lynn called these utility assessment discrepancies "troubling," writing further that these disputes, "... can be avoided, or at least reduced in complexity, by the adoption of a uniform method of utility valuation...However the decision to adopt such a uniform methodology belongs to the Legislature, not this court."

## WATTS HAPPENING

### Automated Outage Reporting (No Waiting!)

Reporting an outage can take as little as 30 seconds...IF we have your phone number on record! Our Outage Management System will recognize your phone number and automatically report your outage. There's no need to wait for a call taker. To add or update your phone number, call NHEC Member Solutions at 1-800-698-2007 (M-F, 8-5); or update anytime on your account homepage at [www.nhec.com](http://www.nhec.com).

### View Your Usage Online

View your monthly, daily or hourly electric usage online at

### NHEC Property Taxes

- Increased 70% Over Past 5 Years
- Accounts for 11% of Co-op's Expenses

We agree wholeheartedly, which is why the Co-op is part of a statewide coalition working to make changes through the legislature that would bring fairness and consistency to the utility property assessing process.

**We support House Bill 324 (HB 324) which proposes municipalities use the New Hampshire Department of Revenue Administration's (DRA) utility property assessments, which the DRA performs annually to calculate the statewide utility property tax for the Co-op and other utilities.**

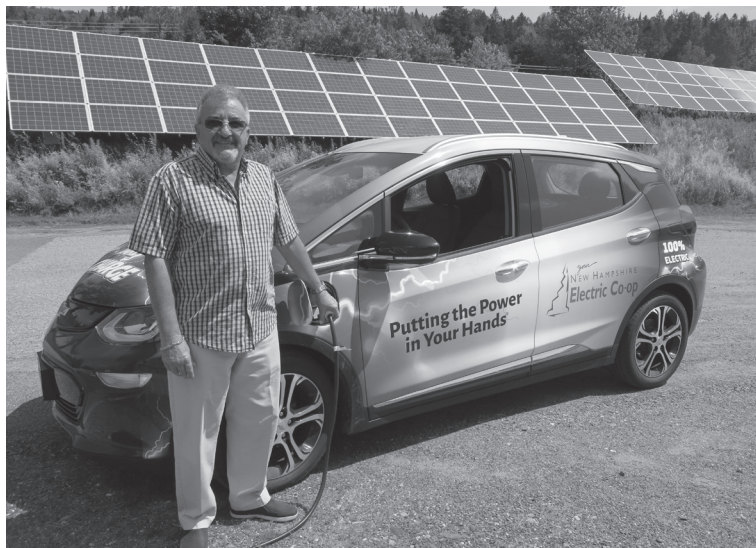
HB 324 has been retained by the House Science, Energy and Technology Committee, which is expected to resume its work on this legislation later this summer. We will be watching closely. If you agree that this problem must be fixed, please email us at [propertytax@nhec.com](mailto:propertytax@nhec.com) or visit [www.nhec.com/propertytax](http://www.nhec.com/propertytax).

[www.nhec.com](http://www.nhec.com). Click the SECURE LOGIN link on the home page and follow the links to My Usage. There, you'll find detailed information that can help you learn more about when you use the most power and track your efforts to reduce your usage.

### Board of Directors Meetings

The NHEC Board of Directors regularly meets on the last Tuesday of each month at the Cooperative's office at 287 Highland Street in Plymouth. Please check the Board of Directors page on the Co-op web site at [www.nhec.com](http://www.nhec.com), or call Sharon Yeaton at (603)536-8801 to confirm the current month's time and location.

# COLEBROOK'S "GREEN GROCER" OPENS EV CHARGING STATION



*With his solar electric array in the background, Guy LaPerle, owner of LaPerle's IGA in Colebrook, marked the opening of New Hampshire's northernmost public charging station by topping off NHEC's all-electric Chevrolet Bolt.*

A large swath of New Hampshire's North Country just became more accessible for drivers of Electric Vehicles (EV) with the opening this summer of two new EV chargers at LaPerle's IGA in Colebrook.

The Level 2 chargers are the northernmost, publicly-available recharging point in the state and fill a critical gap in the EV charging infrastructure between the White Mountains and southern Quebec.

Store owner Guy LaPerle was among the first to take advantage of a new NHEC program that offers **incentives of 50% of the installed cost up to \$5,000** to commercial and municipal

## National Drive Electric Week 2017

National Drive Electric Week, September 9-17, 2017, is a nationwide celebration to highlight the benefits of all-electric and plug-in hybrid-electric cars, trucks, motorcycles, and more. They're fun to drive, less expensive to fuel and better for the environment.

Are you considering going electric? Come see the latest EVs and learn more about Co-op member rebates up to \$1,000 when you purchase an EV in 2017!

**WHEN: September 14, 2017 3-7 p.m.**

**WHERE: Common Man Inn, Plymouth, NH**

members who install public EV chargers. LaPerle said he will not charge users for electricity consumed at the charging stations but will install a donation box, the proceeds of which will be given to North Country charities.

The range of most new EVs has increased significantly. The Chevrolet Bolt, for instance, will go an average of 238 miles on a single charge. But public Level 2 chargers are few and far between in the North Country, especially ones that remain open year-round. The installation of LaPerle's chargers will go a long way towards relieving the "range anxiety" of EV drivers who would otherwise avoid the North Country for fear of being stranded without a place to recharge.

## (SOLAR) POWER TO THE PEOPLE!

In partnership with NHEC, the Plymouth Area Renewable Energy Initiative (PAREI) is rolling out a new program called NH Solar Shares. NH Solar Shares will design and install solar PV arrays for the purpose of sharing solar energy with low income families, increasing the portion of clean renewable energy on the grid and building healthier, more environmentally sustainable communities.

These small community-scale solar PV arrays will be built one community at a time, inspired by a task force of local volunteers and funded through charitable donations, grants, the state's solar incentive and a donated lease of land. The majority of the PV electricity will be credited directly to the electric bills of low income families living in the region of the solar PV array. For more information, please visit [www.nhsolarshares.org](http://www.nhsolarshares.org).

The inaugural Solar Shares array will be built in Plymouth, NH on land donated by The Common Man Family of Restaurants, next to the Frosty Scoops ice cream stand located in front of The Common Man Inn & Spa on Main Street. It will consist of three pole mounted solar arrays serving as shade for customers as well as a solar picnic pavilion.

## TAX CREDITS FOR DONATIONS

New Hampshire businesses can donate to NH Solar Shares and receive a tax credit equal to 75% of their contribution! Pledge your support directly at: [www.nhcdfa.org/taxcredits/current-projects](http://www.nhcdfa.org/taxcredits/current-projects)

For member service  
please call

1-800-698-2007

Monday-Friday, 8-5:00

or visit us online at [www.nhec.coop](http://www.nhec.coop)



To report an outage please call 1-800-343-6432

New Hampshire Electric Cooperative  
579 Tenney Mountain Highway  
Plymouth, NH 03264