



## Briefly...

### Western Union Now Accepting NHEC Bill Payments

Pay your NHEC bill at any one of the dozens of Western Union locations across the state. To find the location nearest you, just visit <http://locations.westernunion.com>. Payments made at Western Union locations will post to your account in 2-3 business days. Please keep your receipt as proof of payment.

### Utility Property Tax Reform Signed Into Law

Thank you to our members who have voiced their support for utility property tax reform. Because of your support, the NH legislature passed and Governor Sununu recently signed a bill into law that establishes a uniform, statewide system for the valuation of all utility property. This law will be phased in over five years, allowing both utilities and municipalities to adjust to the changes. We hope that over time this will be truly a win for Co-op members (as well as other utility customers) and municipal taxpayers.

### Board of Directors Meetings

The NHEC Board of Directors regularly meets on the last Tuesday of each month at the Cooperative's office at 287 Highland Street in Plymouth. Please check the Board of Directors page on the Co-op web site at [www.nhec.com](http://www.nhec.com), or call Sharon Yeaton at (603)536-8801 to confirm the current month's time and location.

## Does Your Home Need Weatherizing? See for Yourself!

All it takes is a couple of clicks to find out if your home is eligible for up to \$4,000 in energy efficiency incentives through NHEC's Home Performance with ENERGY STAR® program. To check your home's eligibility, visit the Home Performance page in the 'For Home' menu at [www.nhec.com](http://www.nhec.com). If you qualify, a participating certified contractor will perform a comprehensive energy assessment of your home, including your attic, exterior walls, windows and basement, as well as your home's heating and mechanical systems.

After the assessment, you'll receive a list of recommended improvements and a cost estimate to complete the recommended work. If you go forward with the work, NHEC will cover the \$100 cost of the energy assessment AND pay for 50% of the installed measures, up to \$4,000.

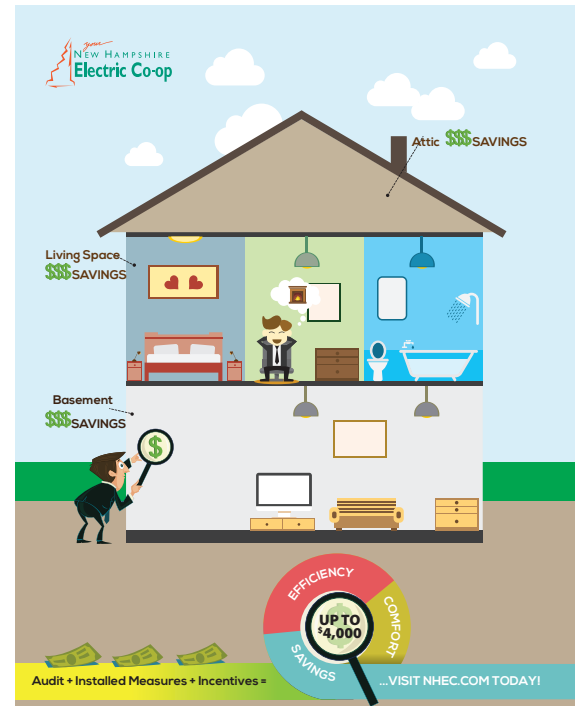
Typical recommended measures include:

- SEALING AIR LEAKS AND ADDING INSULATION
- SEALING DUCTWORK
- UPGRADING LIGHTING
- IMPROVING HEATING AND VENTILATION SYSTEMS
- AFTER-INCENTIVE COSTS MAY BE ELIGIBLE FOR FINANCING

With winter right around the corner, now is the time to make sure your home is performing the way it should!

### This Month's Photo...

Co-op member Christine Richardson of Wakefield captured this sunset over Pine River Pond in Wakefield.



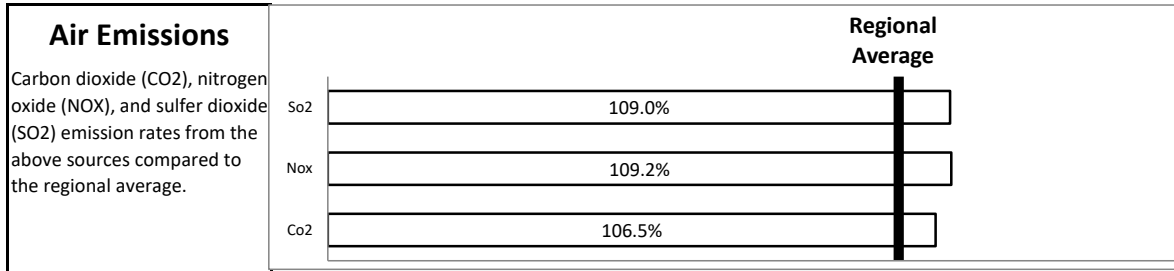
# New Hampshire Electric Cooperative, Inc.

## Co-op Power Resources Information - 2018

Electric providers are required by the New Hampshire Public Utilities Commission to provide customers with an environmental disclosure label with information to evaluate services offered by competitive suppliers and electric utilities, and to provide information about the environmental and public health impacts of electric generation. Further information can be obtained by calling NHEC (800-698-2007) or your competitive electric supplier, or by contacting the Public Utilities Commission. Additional information on disclosure labels is also available at [www.puc.nh.gov](http://www.puc.nh.gov) or at [www.nhec.com](http://www.nhec.com).

Link to PUC website: <http://www.puc.nh.gov/Consumer/Environmental%20Disclosure%20FAQs.html>

Power Sources	Power Source	NHEC's Co-op Power			New England Regional Average
		Known Resources	System Power	Total	
NHEC's 2018 Co-op Power was generated by the following sources:	Biomass	2.04%	0.13%	2.17%	3.07%
	Coal	0.00%	7.31%	7.31%	6.56%
	Hydro	2.30%	0.89%	3.19%	6.33%
	Imported Power	0.00%	17.50%	17.50%	17.81%
	Landfill Gas	4.12%	0.00%	4.12%	1.14%
	Municipal Trash	0.00%	0.38%	0.38%	2.52%
	Natural Gas	0.49%	29.26%	29.75%	28.20%
	Nuclear	0.00%	22.44%	22.44%	22.44%
	Oil	0.15%	6.43%	6.58%	5.76%
	Geothermal/other	0.02%	0.00%	0.02%	0.00%
	Solar	1.07%	0.15%	1.22%	2.31%
	Wind	5.30%	0.01%	5.31%	3.83%
	<b>Total</b>		<b>15.5%</b>	<b>84.5%</b>	<b>100.0%</b>



**Power Sources:** The electricity you consume comes from the New England power grid, which receives power from a variety of power plants and transmits the power as needed to meet the requirements of all customers in New England. When you choose a power supplier, that supplier is responsible for generating and/or purchasing power that is added to the power grid in an amount equivalent to your electricity use. 'Known Resources' include resources that are owned by, or under contract to, the supplier. 'System Power' represents power purchased in the regional electricity market. Electric suppliers are required to obtain a certain amount of renewable energy in accordance with RSA 362-F, the state's renewable portfolio standard law. They may also choose to obtain amounts of renewable energy above their legal obligation, and utilities offer a renewable energy option to allow customers to choose to support the purchase of additional renewable energy by the utility. *NHEC purchases much of its power from wholesale suppliers, many of whom have renewable obligations and therefore may not include low emission resources in the System Power they offer for sale.*

**Emissions:**

*Sulfur Dioxide (SO<sub>2</sub>)* is formed when fuels containing sulfur are burned, primarily coal and oil. Major health effects associated with SO<sub>2</sub> include asthma, respiratory illness and aggravation of existing cardiovascular disease. SO<sub>2</sub> combines with water and oxygen in the atmosphere to form acid rain, which raises the acid level of lakes and streams, and accelerates the decay of buildings and monuments.

*Nitrogen Oxides (NO<sub>x</sub>)* form when fossil fuels and biomass are burned at high temperatures. They contribute to acid rain and ground-level ozone (or smog), and may cause respiratory illness when there is frequent high level exposure. NO<sub>x</sub> also contribute to oxygen deprivation of lakes and coastal waters which is destructive to fish and other animal life.

