

Section 6: Generating Equipment Owned by Members

GENERAL

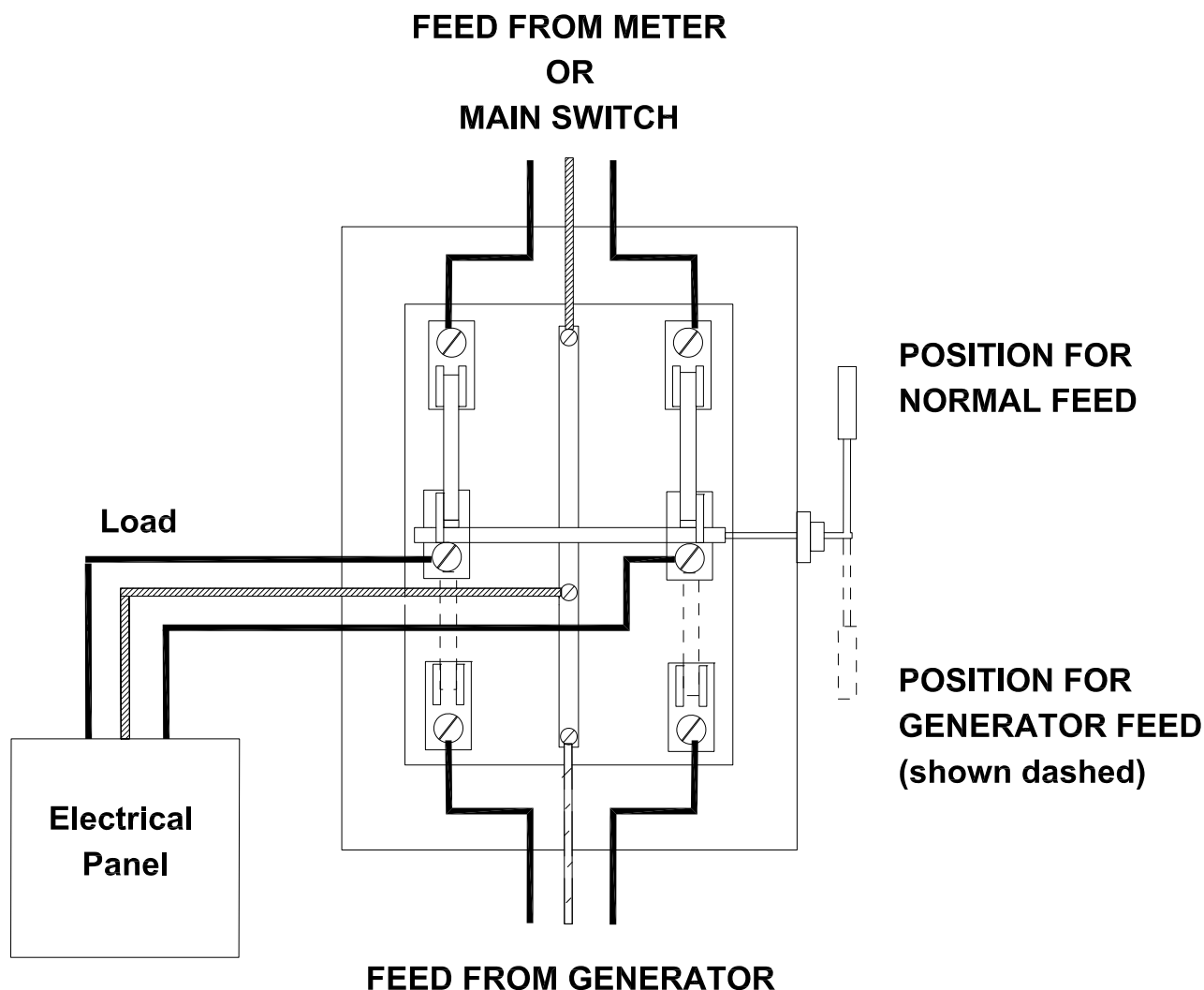
The installation, connection, and operation of Member-owned generating equipment by a Member who takes service from NHEC may be restricted under the provisions of rates in NHEC's Tariff. The Member shall contact NHEC to obtain this information as part of the Member's planning to make an installation of generating equipment. Prior to operation of Member-owned generating equipment, NHEC shall have the right to inspect any Member-owned controlling and safety equipment associated with the generating equipment, together with the manner in which the generator is electrically connected to the Member's load and/or NHEC's electrical system to assure itself that the operation of this equipment will not create an undue risk of damage or injury to NHEC or its other Members.

STANDBY GENERATING EQUIPMENT

Members may install generating equipment to serve as a standby source of electricity to supply all or a part of the Member's load in the event of an interruption in the supply of electricity from NHEC. The Member's interconnection shall be arranged so that no electrical connection can occur between NHEC's service and the Member's standby source of supply. The standby source shall be controlled through the use of a double throw switch, (Refer to Construction Standard DPS1 located on page 53) installed in a manner acceptable to NHEC, and designed to prevent the possibility of any electrical connection between NHEC's normal electrical supply and the Member's standby source. At NHEC's discretion, the Member's standby source may be allowed to connect with NHEC's supply provided certain conditions set forth by NHEC are addressed by the Member.

ATTENTION:

You must contact New Hampshire Electric Co-op BEFORE breaking the seal to remove any electric meter that is served by NHEC.

**NOTES:**

- 1.) Typical double-pole throw switch installation for use with a back-up generator.
- 2.) NHEC recommends that only those circuits needed in an emergency (i.e.: oil burner, one lighting circuit, etc.) be isolated in a separate electric panel, as most generators are not large enough for the load demanded by all your household appliances. As illustrated, this electric panel can be fed from either your main switch or the generator.
- 3.) If the generator is large enough to carry your entire load, the main switch may be connected to the load side of the double pole-double throw switch. The feed to this switch would then be from your generator or directly from our meter.
- 4.) NHEC urges you to contact a qualified electrician or the supplier of the generator to determine the operating limits of the unit you purchase.
- 5.) Please notify NHEC at 1-800-698-2007, if and when you install a back-up generator, so we can update our records to reflect your installation.
- 6.) You must contact New Hampshire Electric Co-op BEFORE breaking the seal to remove any electric meter that is served by NHEC.