

# PRIDE & PERIL

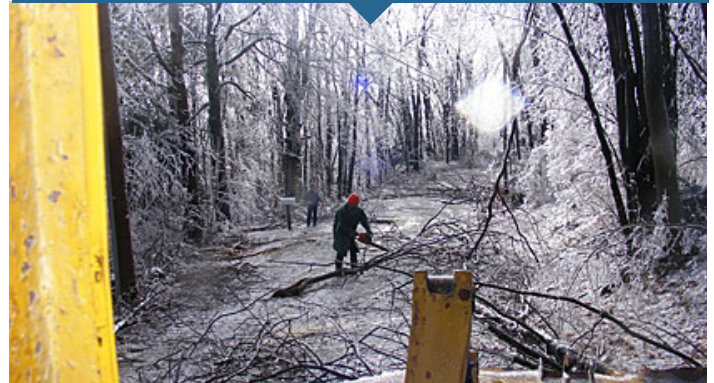
From catastrophic ice storms to historic firsts, Decembers have always been eventful for New Hampshire Electric Cooperative...take a look!

DECEMBER 4, 1939



More than 300 people gather in a pasture in the small town of Lempster, where the New Hampshire Electric Cooperative has set its first utility pole in the ground. It's the start of a network that will at last deliver the promise of electricity to rural New Hampshire.

DECEMBER 11, 2008



The Ice Storm of 2008, one of the worst on record, knocks out power to half of all NHEC members. Some members are out for as long as 10 days. Across the Northeast, the storm plunged 1.7 million people into the dark and caused billions of dollars in damage.

DECEMBER 15, 2020



NHEC returns to Lempster for another historic first, cutting the ribbon on its new broadband internet service. NHEC's subsidiary, NH Broadband, is providing this next essential service to members in the same locations that were electrified by NHEC over 80 years ago.

DECEMBER 23, 2022



Winter Storm Elliott arrives with howling winds that break more than 100 utility poles and cause damage in more than 500 locations around NHEC service territory. After a dark Christmas for many, power is finally restored by December 28.

# Sharing the Sun with Our Neighbors



Sandra Jones and NH Solar Shares are preparing to cut the ribbon on their third community solar array, this one in Center Harbor.

## 3 Questions with Sandra Jones, Founder & Director of Plymouth Area Renewable Energy Initiative (PAREI)

Since 2004, PAREI and its corps of community volunteers have been helping Plymouth area residents reduce their energy use and produce solar energy, one building at a time. PAREI and its NH Solar Shares program will cut the ribbon this month on its third solar PV array. Funded by community donations and the NHDOE Renewable Energy Fund, the array is located at the scenic home of the Lakes Region Conservation Trust in Center Harbor. The 35 KW array will produce clean, carbon-free energy that will be shared with income-qualified families served by NHEC.

**Q: PAREI and NHEC teamed up in 2016 to create NH Solar Shares. After seven years and three community-funded solar arrays, what's been the impact of the program for participants?**

A: Since our inaugural NH Solar Shares project went on-line at the end of 2018 (the solar picnic pavilions located in Plymouth), the program has provided over \$25,200 in solar bill credits. We have had 39 households participate to date and the Center Harbor program will increase that to 51 by the end of 2023. The program has had a positive impact beyond the financial and environmental benefits of solar energy, the participants meet up socially several times a year to learn about home energy savings and to maintain the grounds around the solar sites.

**Q: PAREI began with a focus on energy efficiency and renewable energy but has expanded to include programs like Local Foods Plymouth, Little Gardens Everywhere, Farm to Community Food Sharing and NH Rural Renewables. What advice do you have for other Co-op members who may want to replicate these programs in their communities?**

A: My advice is to start by getting involved with your town's energy commission, energy related local non-profits or local farmers' market committee. What's important is to enact creative approaches that will include everyone and every town in New Hampshire's transition to utilizing more solar energy and using energy more efficiently.

**Q: In your rare free time, what do you do to unwind and have fun?**

A: I love to take walks in the woods with my dog, ride my mountain bike and once the snow flies, go Nordic skiing. I also like to use my free time in ways that reduce my personal carbon footprint such as vegetable gardening, composting, hanging our clothes out to dry and repurposing as many home items as possible.



## Join Round Up and Pay It Forward

During this season of giving, there's an easy way to give back to your community. Join the Round Up program and your NHEC bill is rounded up to the next dollar, with the change benefiting the NHEC Foundation. Since 2006, the NHEC Foundation has awarded millions in grants to non-profits and community groups throughout our NHEC towns.

Join Round Up today:  
[www.nhec.com/round-up-program](http://www.nhec.com/round-up-program).

## Holiday Call Center Closures

In observance of upcoming holidays, NHEC and the Member Solutions Call Center will be closed on:

- December 22, 2023
- December 25, 2023
- January 1, 2024.

Bill pay and outage reporting are always available 24/7 at [www.nhec.com](http://www.nhec.com), or 1-800-698-2007.



# YOUR CO-OP, YOUR BUSINESS LET'S WORK TOGETHER

**Instant Rebates, No Paperwork, No Problem!**

The NHSaves® utility partners are making it easy for New Hampshire businesses to save energy and money. If you're a municipal or commercial member of New Hampshire Electric Cooperative, you can now get instant rebates at the distributor with no paperwork to file. Get the best deals upfront on energy-efficient equipment and controls, including:

- Heat Pumps
- Heat Pump Water Heaters
- Commercial Food Service Equipment
- Packaged Terminal Heat Pumps
- Air Conditioners
- LED Lighting Fixtures
- HVAC Equipment & Controls
- ECM Circulator Pumps

Boost your bottom line with energy efficiency!  
PROGRAMS: [www.nhec.com/commercial](http://www.nhec.com/commercial)  
CONTACT US: (800) 698-2007; [solutions@nhec.com](mailto:solutions@nhec.com).

[nhsaves.com/businesses-towns/electric](http://nhsaves.com/businesses-towns/electric)

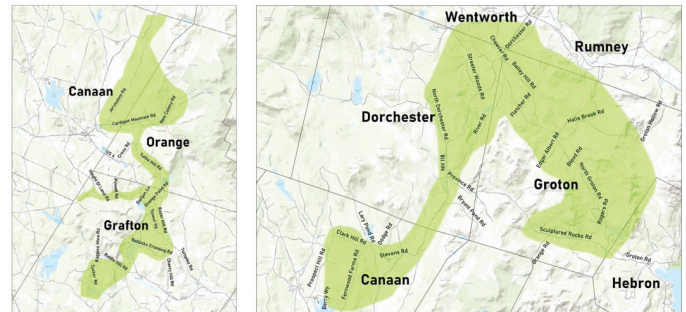
## NH Broadband Expands Service to 1,500 More Homes and Businesses

NH Broadband has expanded into more areas of Grafton County! This month's zone openings will provide service to 1500 homes and business in Canaan, Orange, Grafton, Rumney, Dorchester, Wentworth, and Groton.

Are you in the highlighted area? It's your lucky day! Head to [www.NHBroadband.com](http://www.NHBroadband.com), or call (866) 431-1928 to sign up for fiber-fast internet today. Not sure if service is available where you live? Click 'Check Availability' on our website and enter your address.

If you've been settling for a slow connection, get ready for speeds up to 2 Gig per second! NH Broadband offers unparalleled reliability and affordable pricing, and it's all backed by your local New Hampshire Electric Cooperative.

Join the broadband movement! Sign up now at [www.nhbroadband.com](http://www.nhbroadband.com).



## Seeking Candidates for Board of Directors

NHEC is governed by an 11-member Board of Directors, which is elected by the members it serves. Want to get more involved in your Co-op? Consider running for a seat on the Board! NHEC seeks broad representation on the Board of Directors and encourages members from all parts of our service territory to consider serving.

For more information, contact Sharon Yeaton at 603-536-8801, or [yeatons@nhec.com](mailto:yeatons@nhec.com).



# New Hampshire Electric Cooperative, Inc.

## Co-op Power Resources Information - 2022

Electric providers are required by the New Hampshire Public Utilities Commission to provide customers with an environmental disclosure label with information to evaluate services offered by competitive suppliers and electric utilities. Further information can be obtained by calling NHEC (800-698-2007), your competitive electric supplier or the Public Utilities Commission. Additional information on disclosure labels is available at [www.puc.nh.gov](http://www.puc.nh.gov) or [www.nhec.com](http://www.nhec.com).

Link to PUC website: <http://www.puc.nh.gov/Consumer/Environmental%20Disclosure%20FAQs.html>

Power Source	NHEC's Default Service (Co-op Power)			New England System Mix
	Known Resources	Residual Mix	Total	
Geothermal/Other	0.0%	0.0%	0.0%	0.2%
Hydro	1.6%	2.5%	4.1%	10.5%
Nuclear	0.0%	4.0%	4.0%	19.6%
Solar	2.2%	0.4%	2.6%	5.1%
Wind	7.8%	0.0%	7.8%	5.4%
Total Emissions Free	11.6%	6.9%	18.5%	40.7%
Biomass	0.6%	0.0%	0.6%	2.1%
Coal	0.0%	0.4%	0.4%	0.3%
Imported Power	0.0%	15.5%	15.5%	11.4%
Landfill Gas/other	0.0%	0.0%	0.0%	1.2%
Municipal Trash	0.0%	0.1%	0.1%	2.2%
Natural Gas	0.1%	56.5%	56.6%	37.0%
Oil	0.1%	8.2%	8.3%	5.1%
<b>Total</b>	<b>12.33%</b>	<b>87.7%</b>	<b>100.0%</b>	<b>100.0%</b>

Air Emissions	Carbon dioxide (CO <sub>2</sub> ), nitrogen oxide (NO <sub>x</sub> ), and sulfur dioxide (SO <sub>2</sub> ) emission rates from the above sources compared to the total emissions for New England	
	Total NHEC Mix (Lbs/MWh)	NEPOOL System Mix (Lbs/MWh)
Carbon Dioxide (CO <sub>2</sub> )	603.60	626.52
Nitrogen Oxide (NO <sub>x</sub> )	0.67	0.62
Sulfur Dioxide (SO <sub>2</sub> )	0.44	0.35

### Power Sources:

The electricity consumed in New England is created from a variety of power plants both in and outside the region. When you choose a power supplier, that supplier is responsible for generating and/or purchasing power in an amount equivalent to your electricity use. In the table above, 'Known Resources' include resources that are owned by, or under contract to NHEC. 'Residual Mix' represents power purchased in the regional electricity market, of which some will have had its renewable attributes removed through the sale of Renewable Energy Certificates (RECs) to meet regional Renewable Portfolio Standards (RPSs). NH Electric suppliers are required to obtain a certain amount of RECs in accordance with the state's RPS law RSA 362-F. Suppliers and utilities may offer energy options that contain a higher level of RECs than required by the New Hampshire's RPS. Please see <http://www.puc.nh.gov> for more information on New Hampshire's Renewable Portfolio Standard. 'System Mix' represents all power generated in New England, including power used to meet RPS requirements.

### Emissions:

Please see NH RSA 125-O for annual emission caps.

*Carbon Dioxide (CO<sub>2</sub>)* is released when fossil fuels (e.g., coal, oil and natural gas) and some solid fuels (e.g. wood and biomass) are burned. CO<sub>2</sub>, a greenhouse gas, is a major contributor to climate change. The amount of CO<sub>2</sub> released by the power sector within New England is capped by the Regional Greenhouse Gas Initiative (RGGI). Please visit [RGGI.org](http://RGGI.org) for more information.

*Nitrogen Oxides (NO<sub>x</sub>)* form when fossil fuels and biomass are burned at high temperatures. They contribute to acid rain and ground-level ozone (or smog), and may cause respiratory illness when there is frequent high level exposure. NO<sub>x</sub> also contribute to oxygen deprivation of lakes and coastal waters which is destructive to fish and other animal life.

*Sulfur Dioxide (SO<sub>2</sub>)* is formed when fuels containing sulfur are burned, primarily coal and oil. Major health effects associated with SO<sub>2</sub> include asthma, respiratory illness and aggravation of existing cardiovascular disease. SO<sub>2</sub> combines with water and oxygen in the atmosphere to form acid rain, which raises the acid level of lakes and streams, and accelerates the decay of buildings and monuments.