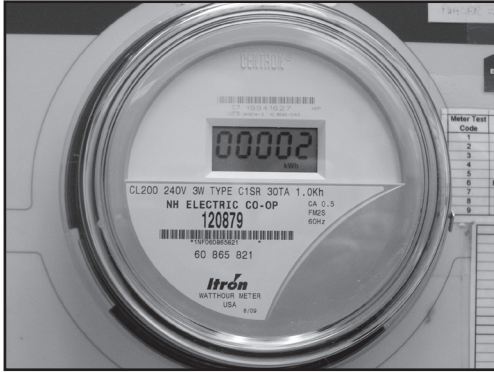


Featured Article:

## Advanced Metering Infrastructure (AMI): Get the Facts



Starting this fall, NHEC will begin swapping out existing electric meters with advanced, digital electric meters. At first, it will be business as usual - you'll continue to receive the same electric service with the same rate structure. Over time, however, the new meters will allow you to take advantage of new tools to better manage your electricity use. How will a simple meter do that? Let's look at the facts...

### AMI meters feature two-way communications.

All 80,000 meters in NHEC's service territory are being replaced over the next three years. Instead of a meter reader visiting your property once a month to record your usage, AMI meters will report their own readings via a wireless communications network. NHEC will receive the same information from these meters as it currently does, however, the information will be more timely and provide you with more information on your energy usage so you can make decisions on how you use energy. These meters will also provide more real-time information on power outages. This will enable more efficient operations and communications.

### AMI can help you control your energy costs – but only if you want it to.

The two-way flow of information that is possible with AMI opens the door to a number of potential cost saving applications, but only if you want to take advantage of them. By installing switches on the biggest energy users in your home – air conditioners, clothes dryers, water heaters, etc. – a signal can be sent through your meter that lowers or shuts down these appliances when energy prices or regional demand exceed a pre-set limit. However, simply installing an AMI meter at your home or business does not give NHEC the ability to remotely adjust your energy usage. This feature can only work with the installation of load control devices that will not be installed unless you want them and expressly allow NHEC to install them.

If you choose to participate in the voluntary programs available, this two-way flow of information between your meter and NHEC will provide you with an opportunity to use a variety of in-home energy management systems and intelligent controls in appliances. In fact, members selected from a group of approximately 8,000 will be able to start using some of these enhanced capabilities right away as part of NHEC's Smart Grid Demonstration Project. One thousand demand-response switches will be installed at members' homes in the Demonstration project area who volunteer to be part of the program. These switches will remotely control devices, with the members' consent, such as water heaters or thermal storage devices, helping NHEC reduce its members' peak load. In addition, 500 in-home displays will be provided to selected members' homes, allowing them to understand their energy use patterns, view real-time usage data, historical data and actual costs. Using data collected from the Demonstration group, NHEC will then decide whether or not to expand the program to all members.

### Learn more at [nhec.coop](http://nhec.coop)

The web home of NHEC's AMI transition is [www.nhec.coop](http://www.nhec.coop). Follow the progress of meter installations, browse our list of Frequently Asked Questions and find out when your town is scheduled to receive the new meters. Information is also available by calling NHEC Member Solutions at 1-800-698-2007.

**Skip the Stamp...Pay Your Bill Online! [NHEC.COOP](http://NHEC.COOP)**

## Rebates for Renewable Energy Education Projects



NHEC has rebate money available to help businesses and institutions promote the growth of renewable energy.

Say you're a business that's planning to install a solar hot water system or wind turbine. If you add a public education component to that project (signage, tours of the system, an online link to follow its performance, etc.), then NHEC will rebate 25% of the installed cost up to \$5,000.

All business entities will be eligible including schools, towns, non-profits, for-profits, etc. The only requirement is a component that allows the community to benefit from the installation. For more program details and rebate applications, please visit our website at [www.nhec.com/renewable\\_energy\\_programs](http://www.nhec.com/renewable_energy_programs), or contact Member Solutions at 1-800-698-2007.

## Watts Happening

### Board of Directors Meetings

The NHEC board of directors regularly meets on the last Tuesday of each month at the cooperative's headquarters in Plymouth. Please check the Board of Directors page on the Co-op website at [www.nhec.coop](http://www.nhec.coop), or call Sharon Yeaton at (603) 536-8801 to confirm the current month's meeting time and location.

### Save \$20 on ENERGY STAR® Room Air Conditioners

Co-op members can receive a \$20 mail-in rebate after purchasing an ENERGY STAR-rated room air conditioner. ENERGY STAR models use 10-20% less energy and save an average of \$25 per year on your electric bill. For more information about the full line of ENERGY STAR-rated appliances, including a list of participating ENERGY STAR appliance retailers in New Hampshire, please visit the Co-op online at [www.nhec.coop](http://www.nhec.coop).

### A Boat Trailer, Portrait Camera and a Compound Bow

What do they have in common? They were all for sale last month in the online Co-op Classifieds. Buy, sell or swap at [www.nhec.coop](http://www.nhec.coop). Ads are free of charge to Co-op members and there's no limit on how many ads you can post. To get started, register online and follow the links to post your free ads.

### Free Fluorescent Bulb Recycling

Our Plymouth headquarters (Tenney Mountain Highway) and Meredith District building (Route 25) are accepting fluorescent tubes up to four feet in length, and compact fluorescents (limit six per household, per visit). Hours of Operation:

Plymouth: 8 a.m. – 4:30 p.m., M-F

Meredith: 7:30 a.m. – 2 p.m., M-F

## Co-op Member Discounts

**Deyab Electric, L.L.C.**  
Robert G. Deyab II,  
Master Electrician Serving the  
Lakes Region

**25% Off All Services**  
(limit one 8-hour day)

**Free CFL Bulb w/Every Light  
Fixture Installed**  
(while supplies last; limit 20 per household)

[www.deyabelectric.com](http://www.deyabelectric.com) 603-944-8181  
Coupon expires December 31, 2010



**\$500 Off Admission**

153 Parade Road  
Meredith, NH 03253

"COME HOME TO FORESTVIEW"

- Long Term, Dementia and Alzheimer Care
- Short Term Respite – Grant money available
- Adult Day Care
- Veterans Funds Available

For more information and a tour please call  
Susan at 279-7612

[www.forestviewmanor.com](http://www.forestviewmanor.com)



**Harborside Dental**  
Center Harbor, NH

**25% Off**  
**New Patient Cleaning**

- prophylaxis only
- one discount per person
- must present coupon at time service is rendered

[www.drtaoka.weebly.com](http://www.drtaoka.weebly.com) 603-253-8700

White Mountain Photography and Photo-Gallery  
Located at The Snowflake Inn, in Jackson Village, NH  
P.O. Box 285, Bartlett, NH 03812  
603-374-6050



**25% Off**

**All Purchases**

Limit one coupon per person

Coupon expires December 31, 2010



For member service  
please call  
1-800-698-2007  
Monday-Friday, 8-5:00  
or visit us online at [www.nhec.coop](http://www.nhec.coop)

To report an outage  
please call  
1-800-343-6432

New Hampshire Electric Cooperative  
579 Tenney Mountain Highway  
Plymouth, NH 03264